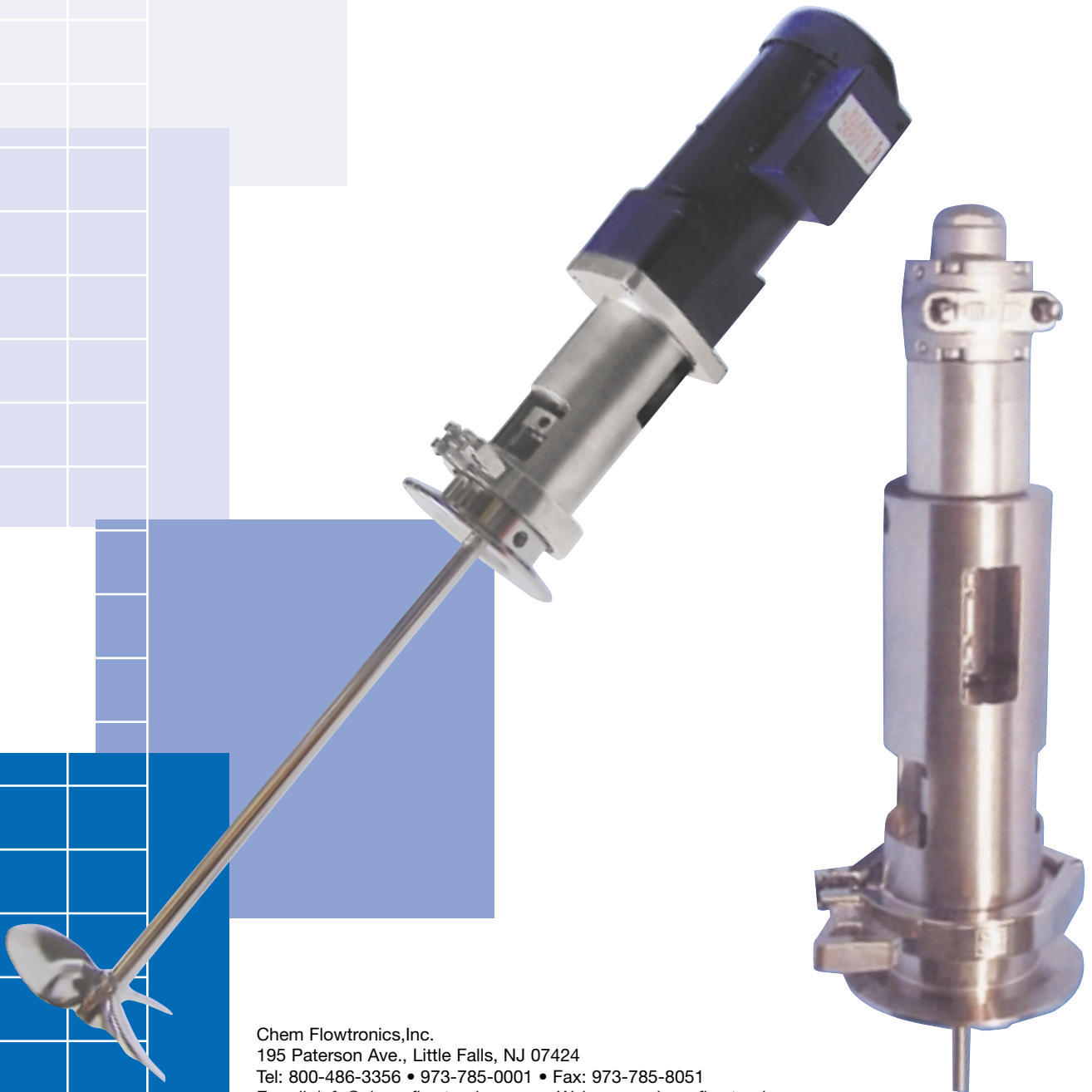




CHEM FLOWTRONICS

CFL Sanitary Process Mixers



Chem Flowtronics, Inc.
195 Paterson Ave., Little Falls, NJ 07424
Tel: 800-486-3356 • 973-785-0001 • Fax: 973-785-8051
E-mail: info@chem-flowtronics.com • Web: www.chem-flowtronics.com

Optional Equipment



Air Motor
1/3 HP
7:1 Gear Planetary



Gear Reduced Electric
AC/DC

Frequency Controller



Easy Removable Motor
For Cleaning/Autoclave



Dual Sealed Bearing
Standard Centered 3"
1" Center Low Profile



Single Dry Run
Mechanical Seal



Lip Seals
PTFE/Rubber

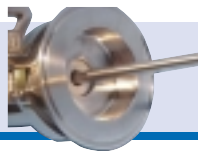


Option Dual
Mechanical
Seal

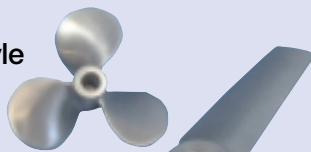
Sanitary Mechanical Seal
Debris Well



Sanitary Tri-Clamp



Marine Style



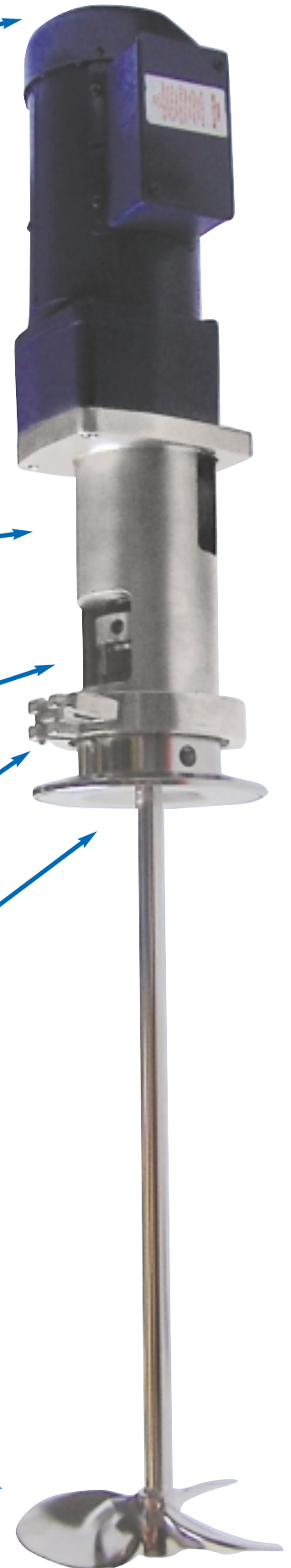
Sanitary Axial



Sanitary Hyflow



Axial





CHEM FLOWTRONICS

CFL Sanitary Mixer

Chem Flowtronics CFL Mixer Series offers a compact, powerful, mixer designed, to meet today's most complex mixing applications.

Designed for the pharmaceutical, biotech, food & cosmetic industries, the CFL can be adapted to specifications in variety of other markets such as, chemical, electronics, and many other applications.

CFL Features:

- Sanitary Tri-Clamp Vessel Mount
- Compact Rugged Design
- Dual Sealed Roller Bearing
- Mechanical Seal
- Air/Electric Motors

Specifications:

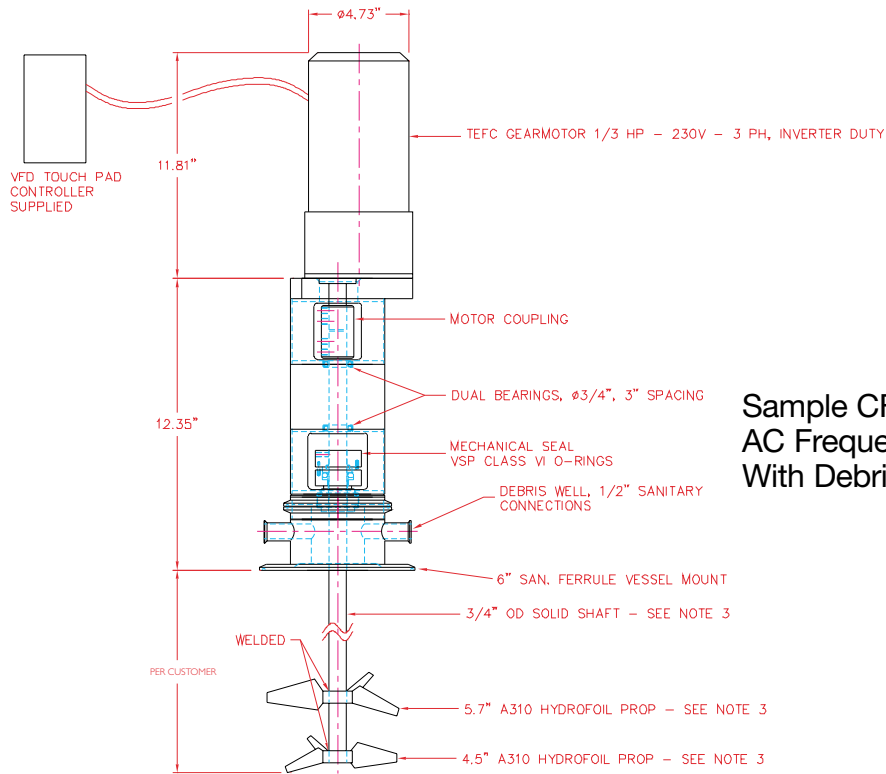
- Stainless pedestal, 316SS, ASTM A 270, 3" bearing centers, ASTM A182 bearing mounts
- Stainless OD 180 Grit, 20 Ra, non wetted pedestal
- Shaft 316SS OD centerless ground, + .000/-0.002
- Mechanical Seal: 0-1200rpm, single dry run, carbon / ceramic face, full vacuum to 120psig
- Fixed rigid SS coupling, 180 degree dual set screw, motor- shaft
- Air Motor @ 80psi/approx. 12cfm, 1/8" NPT inlet & outlet
- Air motor gear box in-line planetary 7:1 gear reduction
- Heavy duty lower mechanical/mounting assembly
- Propeller, precision bore & welded, sealed, polished 180 grit /20Ra
- Marine style propeller

Options:

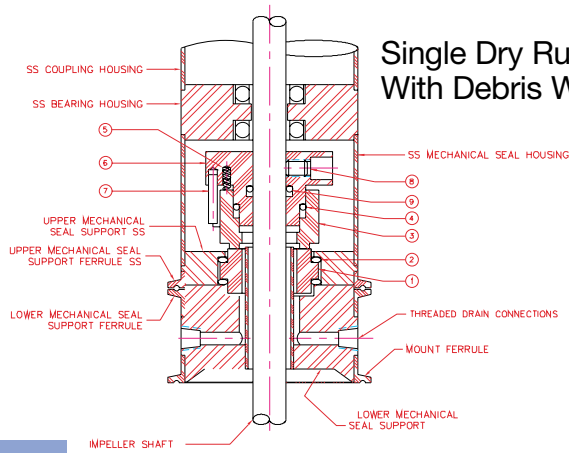
- Motors: Air 1/3hp - 1.5 hp. Electric motors, direct drive, geared, variable speed, 110 - 208 - 460V, AC/DC, TEFC - exp proof, wash down, stainless motor construction, frequency controllers
- Drives: Planetary gear boxes, right angle worm gear
- RPM indication
- Quickly removable motor assembly for easy cleaning
- Dual bearing low profile pedestal arrangement
- Mechanical seals: single, double, dry running
- Debris well for mechanical seal with NPT or tri-clamp flushing connections
- Elastomers selection for mechanical seals
- Main shaft lip seal, rubber - PTFE
- Vessel tank mount, tri-clamp or flanged
- Shaft sizes 3/8" - 1/2" - 3/4" - 1"
- In tank shaft coupling
- Propellers: Marine, Hyflow, Axial, Turbine
- Propeller 218 / 310 Designs
- Dual propellers, with combined prop designs
- 2 - 3 - 4 blade prop options
- Wetted materials available in alloys, C276 or C22 Hastelloy
- Surface finish selections from mill to mirror finish, 320grit, electro-polish, etc. ID & OD
- Pedestal construction of aluminum for use in direct mounting to glass vessels
- Independent vessel mount system



Chem Flowtronics, Inc.
195 Paterson Ave., Little Falls, NJ 07424
Tel: 800-486-3356 • 973-785-0001 • Fax: 973-785-8051
E-mail: info@chem-flowtronics.com • Web: www.chem-flowtronics.com

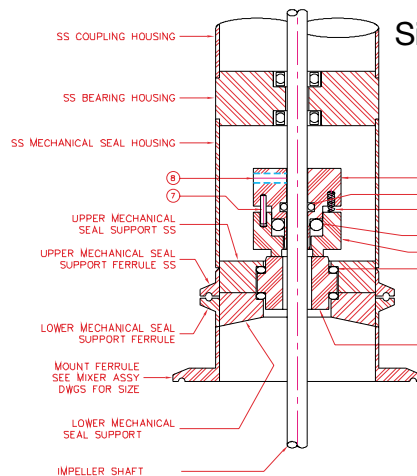


Sample CFL Sanitary Mixer With Electric AC Frequency Controller, Mechanical Seal With Debris Well, Dual Hyflo Propellers



Single Dry Run Mechanical Seal With Debris Well

SEAL COMPONENTS		
HW	DESCRIPTION	QTY
1	STATIONARY SEAL	1
2	O-RING	2
3	SEAL RING	1
4	O-RING	1
5	SEAL SPRINGS	6
6	SEAL COLLAR	1
7	ALIGNMENT PIN	6
8	SET SCREW	3
9	O-RING SHAFT	1



Single Dry Run Mechanical Seal

SEAL COMPONENTS		
HW	DESCRIPTION	QTY
1	STATIONARY SEAL	1
2	O-RING	2
3	SEAL RING	1
4	O-RING	1
5	SEAL SPRINGS	6
6	SEAL COLLAR	1
7	ALIGNMENT PIN	6
8	SET SCREW	3
9	O-RING SHAFT	1